



4TH ANNUAL SYMPOSIUM

**Clinical & Pharmaceutical Solutions Through Analysis**

# **CPSA**

## **SHANGHAI**

### **2013**

**Reviving Pharmaceutical R&D with Translational Science,  
Regulatory Efficiency, and Innovative Models**

April 24 - 27, 2013  
Renaissance Shanghai Pudong Hotel  
Shanghai



*Where Technology and Solutions Meet  
Where East Meets West*

# beyond possible

Our mass spectrometers made it possible to both identify and quantify molecules, accelerating drug discovery and development. Now progress requires increasingly smarter tools, developed with your input to fit your workflows. Tools that integrate our powerful hardware and superior software to enable retrospective data analysis and to reveal the disposition of drugs and metabolites with confidence. Tools that maximize productivity. Together with our partners, we are moving beyond possible, to practical, routine solutions.

- 登录[www.thermo.com.cn](http://www.thermo.com.cn)  
服务热线: 800 810 5118 400 650 5118

**Q Exactive Benchtop Orbitrap**  
High resolution, accurate mass and  
simultaneous qual/quant



**Orbitrap Elite Hybrid LC-MS**  
Gold Standard for accurate mass and now to  
240,000 resolution

UHPLC



## WELCOME

### Inspiration to Application

Dear Colleague:

On behalf of the organizing committee and our sponsors, we welcome you to the 4th Annual Shanghai Symposium on Clinical and Pharmaceutical Solutions Through Analysis (CPSA Shanghai 2013). It is a great pleasure to host this unique event in Shanghai again.

The goal of CPSA Shanghai annual meetings is to provide in-depth reviews of innovative technology and industry practices through the open discussion of issues and needs. At CPSA Shanghai, the diversified symposia and roundtables are highly interactive events where scientists share their experiences and visions in a collegial setting. The program will highlight speakers and sessions that provide firsthand experiences as well as latest guidance by regulatory agencies, which reflects the theme of this year's meeting "Reviving Pharmaceutical R&D with Translational Science, Regulatory Efficiency, and Innovative Models." In addition to the successful Young Scientist Excellence Award, the successful Executive Roundtable Discussion with panelists representing MNCs, CROs and home-grown start-ups, to discuss the dynamic and evolving offshore R&D environment will once again take place Wednesday evening. The unique Innovation Award, which promotes active involvement of our premier exhibitors, as well as scientists, will also be featured.

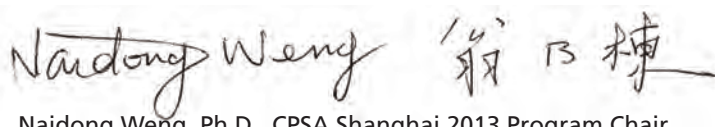
Imagination and stimulating discussion are central to each CPSA function and session. We aim to bring scientists together from both East and West; and thus, CPSA Shanghai 2013 has created a unique meeting environment that encourages ideas sharing and promotes creative thinking. Our hope is for attendees to actively participate in the conference and to become inspired with new ideas, new contacts, and with practical actions they can apply.

Special thanks are extended to our sponsors who all share their sincere beliefs that CPSA Shanghai is the premier international event to meet experts in the field and to openly discuss our industry's most fundamental challenges. Enjoy the conference where technology and solutions meet... And where East meets West!

Sincerely,



Mike S. Lee, Ph.D., Founder CPSA



Naidong Weng, Ph.D., CPSA Shanghai 2013 Program Chair

## ORGANIZING COMMITTEE

### PROGRAM CHAIR

#### Naidong Weng

Janssen  
Raritan, NJ USA

### ORGANIZING COMMITTEE

#### Honggang Bi

Covance  
Shanghai, China

#### Kevin Bittorf

Vertex Pharmaceuticals  
Cambridge, MA

#### Xiaoping Cao

Pfizer  
Groton, CT USA

#### Jack Chen

DSM Nutritional Products  
Shanghai, China

#### Ziqiang "Zack" Cheng

GlaxoSmithKline  
Shanghai, China

#### Ben Chien

QPS Holdings LLC  
Newark, NJ USA

#### Lucinda Cohen

Merck  
Rahway, NJ USA

#### Kelly Dong

GlaxoSmithKline  
Shanghai, China

#### Alicia Du

ChemPartner  
Shanghai, China

#### Chengwei Fang

Pharmaron  
Beijing, China

#### Lawrence Gan

Biogen Idec  
Cambridge, MA USA

#### Todd Gillespie

Eli Lilly and Company  
Indianapolis, IN USA

#### Xiaoyi Gong

Merck  
Rahway, NJ USA

#### Wenyang Jian

Janssen  
Raritan, NJ USA

#### Yurong Lai

Pfizer  
Groton, CT USA

#### Hua Li

Academy of Military Medical Sciences  
Beijing, China

#### Yan Li

Institute of Materia Medica, Chinese  
Academy of Medical Sciences & Peking  
Union Medical College  
Shanghai, China

#### Yong-Guo "Fred" Li

Hua Medicine, Ltd.  
Shanghai, China

#### Ge Lin

The Chinese University of Hong Kong  
Hong Kong, China

#### Jing Lin

Sunovian  
Marlborough, MA USA

#### Qun Lu

Merck  
Rahway, NJ USA

#### Haojing Rong

Pfizer  
Cambridge, MA USA

#### Nalini Sadagopan

Agilent Technologies  
Santa Clara, CA USA

#### Haifeng Song

Beijing Institute of Radiation Medicine  
Beijing, China

#### Daniel Tang

ICON  
Shanghai, China

#### Gary Valaskovic

New Objective  
Cambridge, MA USA

#### Frances Wang

Roche  
Shanghai, China

#### Xijun Wang

Heilongjiang TCM University  
Harbin, China

#### Yang Wang

Janssen Pharmaceuticals  
Shanghai, China

#### Jing-Tao Wu

Millennium Pharmaceuticals  
Cambridge, MA USA

#### Cindy Xia

Millennium Pharmaceuticals  
Cambridge, MA USA

#### Gang Xue

Pfizer  
Groton, CT USA

#### Eric Yang

GlaxoSmithKline  
King of Prussia, PA USA

#### Nathan Yates

University of Pittsburgh  
Pittsburgh, PA USA

#### Kate Yu

Waters Corporation  
Milford, MA USA

#### Jeff Zhang

Novartis  
Shanghai, China

#### Yining Zhao

Amgen  
Thousand Oaks, CA USA

#### Jenny Zheng

Janssen  
Shanghai, China

#### Dafong Zhong

Shanghai Institute of Materia Medica  
Shanghai, China

#### Shaolian Zhou

Novartis  
Shanghai, China

#### Mingshe Zhu

Bristol-Myers Squibb  
Princeton, NJ USA

### ORGANIZING SUB-COMMITTEES

#### ADME

#### Ziqiang "Zack" Cheng

AstraZeneca  
Shanghai, China

#### Scott Fountain

Pfizer  
San Diego, CA USA

#### Lawrence Gan

Biogen Idec  
Cambridge, MA USA

#### Yurong Lai

Pfizer  
Groton, CT USA

#### Yan Li

Institute of Materia Medica, Chinese  
Academy of Medical Sciences & Peking  
Union Medical College  
Shanghai, China

## ORGANIZING COMMITTEE

### **Ge Lin**

The Chinese University of Hong Kong  
Hong Kong, China

### **Jing Lin**

Sunovian  
Marlborough, MA

### **Haojing Rong**

Pfizer  
Cambridge, MA USA

### **Jing-Tao Wu**

Millennium Pharmaceuticals  
Cambridge, MA USA

### **Cindy Xia**

Millennium Pharmaceuticals  
Cambridge, MA USA

### **Nathan Yates**

University of Pittsburgh  
Pittsburgh, PA USA

### **Jeff Zhang**

Novartis  
Shanghai, China

### **Dafang Zhong**

Shanghai Institute of Materia Medica  
Shanghai, China

### **Mingshe Zhu**

Bristol-Myers Squibb  
Princeton, NJ USA

### PHARMACEUTICAL SCIENCES

#### **Kevin Bittorf**

Vertex Pharmaceuticals  
Cambridge, MA USA

#### **Xiaoping Cao**

Pfizer  
Groton, CT USA

#### **Todd Gillespie**

Eli Lilly and Company  
Indianapolis, IN USA

#### **Xiaoyi Gong**

Merck  
Rahway, NJ USA

#### **Yong-Guo "Fred" Li**

Roche R&D Center  
Shanghai, China

#### **Haifeng Song**

Beijing Institute of Radiation Medicine  
Beijing, China

#### **Gang Xue**

Pfizer  
Groton, MA USA

#### **Yining Zhao**

Amgen  
Thousand Oaks, CA USA

### BIOANALYTICAL SCIENCES

#### **Lucinda Cohen**

Merck  
Rahway, NJ USA

#### **Chengwei Fang**

Pharmaron  
Beijing, China

#### **Wenyong Jian**

Janssen  
Raritan, NJ USA

#### **Daniel Tang**

ICON  
Shanghai, China

#### **Naidong Weng**

Janssen  
Raritan, NJ USA

### EDUCATION

#### **Lawrence Gan**

Biogen Idec  
Cambridge, MA USA

#### **Hua Li**

Institute of Military Medical Sciences  
Beijing, China

#### **Gary Valaskovic**

New Objective  
Cambridge, MA USA

#### **Gang Xue**

Pfizer  
Groton, MA USA

### YOUNG SCIENTIST AWARD

#### **Ziqiang "Zack" Cheng**

AstraZeneca  
Shanghai, China

#### **Griff Humphreys**

Bristol-Meyers Squibb  
Princeton, NJ USA

#### **Yong-Guo "Fred" Li**

Hua Medicine, Ltd.  
Shanghai, China

#### **Jing Lin**

Sunovian  
Marlborough, MA USA

#### **Jasminder Sahi**

GlaxoSmithKline  
Shanghai, China

#### **Cindy Xia**

Millennium Pharmaceuticals  
Cambridge, MA USA

### **Jing-Tao Wu**

Millennium Pharmaceuticals  
Cambridge, MA USA

### **Sylvia Zhao**

Janssen Pharmaceuticals  
Shanghai, China

### **Shaolian Zhou**

Novartis  
Shanghai, China

### EXPOSITION

#### **Kelly Dong**

GlaxoSmithKline  
Shanghai, China

#### **Shaolian Zhou**

Novartis  
Shanghai, China

### INNOVATION AWARD

#### **Kelly Dong**

GlaxoSmithKline  
Shanghai, China

#### **Shaolian Zhou**

Novartis  
Shanghai, China

#### **Mingshe Zhu**

Bristol-Myers Squibb  
Princeton, NJ USA

### LOGISTICS & MANAGEMENT

*Event Services Manager*

#### **Frank Fung**

Mice Partners  
Shanghai, China

*Communications & Media*

#### **Martin Steel**

McKinley Scientific  
Sparta, NJ USA

*Communications & Media*

#### **Carla Marshall-Waggett**

New Objective  
Woburn, MA USA

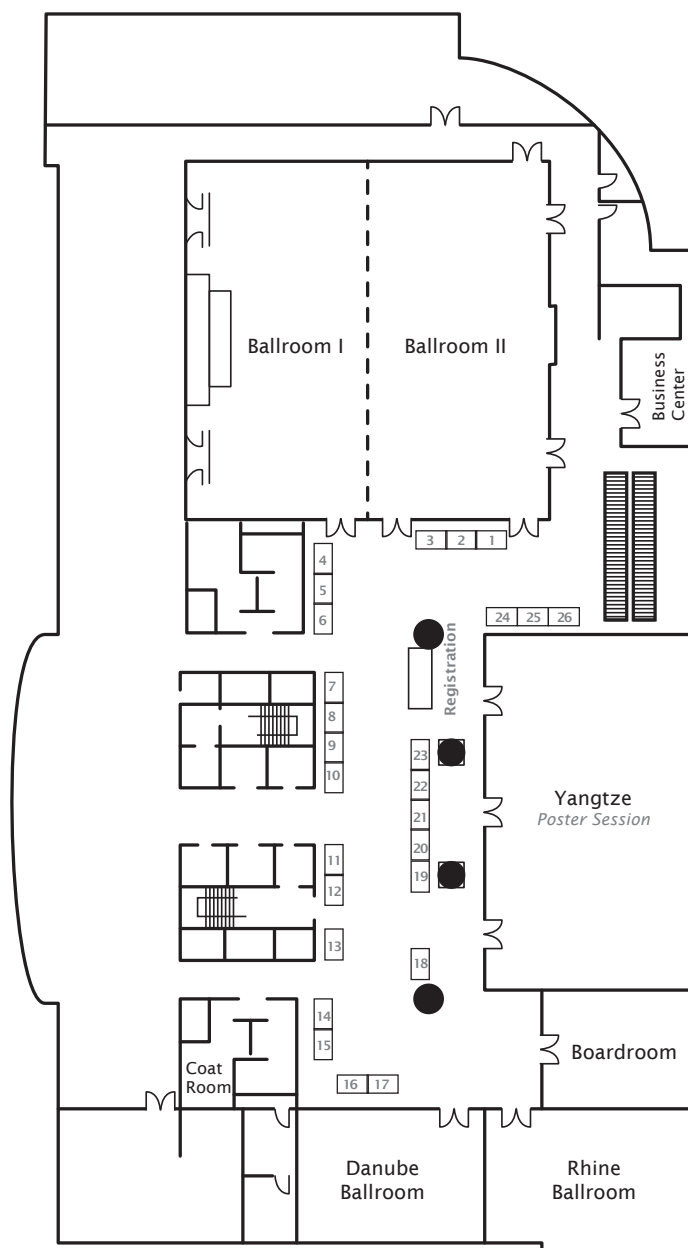
*Management & Correspondence*

#### **Mike Lee**

Milestone Development Services  
Newtown, PA USA

## FLOOR PLAN

The CPSA Shanghai symposia, roundtables, poster session, EXPO and workshops will be held on the 4th Floor Lobby Level in the Renaissance Shanghai Pudong Hotel. Note that the joint meeting on Saturday with local area discussion groups will be held at the Shanghai Institute for Materia Medica.



### EXPO HOURS

The CPSA Shanghai 2013 Exposition will be open on the following schedule, but many company representatives will be on hand throughout the conference.

THURSDAY 11:00 AM - 2:00 PM  
FRIDAY 11:00 AM - 2:00 PM

### EXHIBITORS

Booth#	Company
18	AB SCIEX
4	Agilent Technologies
1	Antpedia
12	Apricot Designs
10	ASPEC Technologies
22	BioGene
14	Bruker Daltonics
16	Carysbio
11	ChemPartner
5	Covance
9	ES Industries
15	Frontage Laboratories
3	instrument.com.cn
20	InVentiv Health
24	In Viro ADMET
8	McKinley Scientific
6	MS Parts
7	New Objective
13	Puracyp
25	Shimadzu
23	Thermo Scientific
19	VWR International
13	Waters Corporation
17	Wiley & Sons

### FOR EXHIBITORS

Move-in: Wednesday, 7:00 pm - 9:00 pm  
Move-out: Friday, 5:00 pm - 7:00 pm

# SPONSORS

**Thank You!**

The CPSA Shanghai annual symposium is made possible by the broad-based support of industry sponsors. The passion for the analytical sciences and the accelerated discovery and development of pharmaceuticals is shared by each sponsor. As a result, the event is dedicated to promoting awareness and understanding of the issues and needs associated with pharmaceutical R&D in the hopes of inspiring significant advances in the field.

## GOLD SPONSORS

## SILVER SPONSORS



## Meeting Management

## Media Sponsors





## WORKSHOPS

**Wednesday** April 24

9:30 AM - 4:00 PM

*Ballroom I*

**WORKSHOP**  
.....

**ADME and Translational Sciences**

**Part I - The Role Overview of Drug Discovery and Development for New Chemical Entities**

*Workshop Leaders: Jing Lin, Sunovion; Jenny Zheng, Janssen Pharmaceuticals*

**LUNCHEON – Sponsored by Agilent Technologies**

**Part II – Challenges of Developing Biologics**

*Workshop Leaders: Haifeng Song, Beijing Institute of Radiation Medicine; Cindy Xia, Millennium Pharmaceuticals*

1:00 PM - 4:00 PM

*Shanghai Institute  
of Materia Medica*

**WORKSHOP**  
.....

**Protein/Peptide Characterization and Quantitation**

This workshop will be held at The Shanghai Institute of Materia Medica, Chinese Academy of Sciences (CAS), Chenggu Hall, 555 Zu Chong Zhi Road, Zhang Jiang Hi-Tech Park, Pudong, Shanghai

*Workshop Leaders: Gary Valaskovic, New Objective; Nathan Yates, University of Pittsburgh*

9:00 AM - 4:30 PM

*Shanghai Institute  
of Materia Medica*

**WORKSHOP**  
.....

**Pharmaceutical Sciences**

This workshop will be held at The Shanghai Institute of Materia Medica, Chinese Academy of Sciences (CAS), Chenggu Hall, 555 Zu Chong Zhi Road, Zhang Jiang Hi-Tech Park, Pudong, Shanghai

*Workshop Leaders: Todd Gillespie, Eli Lilly & Co; Yong-Guo "Fred" Li, Hua Medicine, Ltd.*



# PROGRAM AGENDA

**Wednesday** April 24

**5:00 PM - 6:00 PM**

*Ballroom I & II*

## EXECUTIVE ROUNDTABLE

### Current Strategy on Research and Development of Novel Therapies

*Moderators: Jing-Tao Wu, Millennium Pharmaceuticals; Todd Gillespie, Eli Lilly and Company; Jenny Zheng, Janssen Pharmaceuticals*

*Discussion Panel:*

<i>Honggang Bi</i>	<i>General Manager, Covance China</i>
<i>Li Chen</i>	<i>Co-Founder and CEO, Hua Medicines</i>
<i>Cornelis E.C.A. Hop</i>	<i>Senior Director, DMPK, Genentech</i>
<i>John Newton</i>	<i>Vice President and Global Head, Drug Disposition, Sanofi</i>
<i>Dayao Zhao</i>	<i>Vice President, Head of China R&amp;D, Janssen Pharmaceuticals</i>

*Faced with the productivity challenge in pharmaceutical R&D, pharmaceutical/biotech and contract research organizations are striving to come up with new strategies on the research and development of novel therapies. In this roundtable, we have invited executives from pharma, biotech, and contract research organizations to lead a discussion on the current strategy for new drug R&D.*

**6:00 PM - 9:00 PM**

*Lobby & Ballrooms I & II*

## RECEPTION & SPONSOR'S DINNER

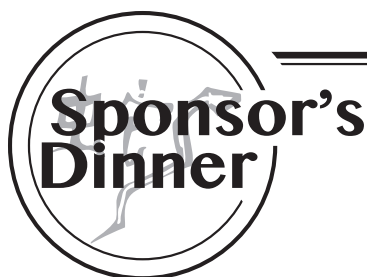
*Hosted by Thermo Scientific*

Program

**Improving the Selectivity of Quantitative Analysis in Biologics by Using HRMS**  
*Patrick Bennett, Thermo Scientific*

**HRMS Strategy for the Characterization of Biopharmaceuticals**  
*Zhiqi Hao, Thermo Scientific*

WEDNESDAY, APRIL 24



## SPONSOR'S RECEPTION & DINNER

WEDNESDAY 6:00 PM

Celebrate the opening of this year's CPSA Shanghai at the gala Sponsor's Reception and Dinner!

A CPSA Shanghai Tradition!

Generously hosted once again by Thermo Scientific.

Enjoy dinner and cocktails, while Patrick Bennett and Zhiqi Hao guide you through the newest applications, workflows and and technology from Thermo Scientific

Welcome to CPSA Shanghai 2013!

Hosted by

**Thermo**  
SCIENTIFIC

# PROGRAM AGENDA

**Thursday** April 25

**7:30 AM**

**REGISTRATION OPEN**

**8:30 AM – 9:00 AM**

**OPENING REMARKS**

*Ballrooms I & II*

**Welcome**

*Mike Lee, Milestone Development Services*

**Objectives, Format, and Opening Remarks**

*Naidong Weng, Janssen Pharmaceuticals - Program Chair*

**9:00 AM - 9:45 AM**

**PLENARY LECTURE**

*Ballrooms I & II*

**The Impact of Metabolism and Pharmacokinetics in Translational Medicine: What Innovation Has Brought Us and What Challenges Still Exist?**

*John Newton*

*Vice President and Global Head, Drug Disposition Projects, Standards and Innovation Sanofi*

**9:00 AM – 5:00 PM**

**POSTER HALL OPEN**

*Yangtze Ballroom*

*Chairs: Alicia Du, ChemPartner; Frances Wang, Roche; Shaolian Zhou, Novartis*

*Posters will be available all day Thursday - Friday*

**10:15 AM - 11:45 AM**

**SYMPOSIA & ROUNDTABLES**

<p><b>DMPK Role in Drug Discovery, Development, and Regulatory Interaction</b></p> <p><i>Ballroom I</i></p>	<p><b>Bioanalysis of Biomolecules</b></p> <p><i>Ballroom II</i></p>
<p><i>Chairs: Cindy Xia, Millennium Pharmaceuticals; Jenny Zheng, Janssen Pharmaceuticals</i></p> <ul style="list-style-type: none"> <li>▶ Physiologically Based Pharmacokinetics Joined with In Vitro-In Vivo Extrapolation of ADME: A Marriage Under the Arch of Systems Pharmacology <i>Amin Rostami, University of Manchester</i></li> <li>▶ Drug Metabolism Related Issues in Support of Drug Development and Registration <i>W. Griff Humphreys, Bristol-Myers Squibb</i></li> <li>▶ Panel Discussion: The Latest Development in Regulatory Requirement for DDI Assessment <i>Moderators: Cindy Xia, Millennium Pharmaceuticals; Jenny Zheng, Janssen Pharmaceuticals</i></li> </ul>	<p><i>Chair: Daniel Tang, ICON</i></p> <ul style="list-style-type: none"> <li>▶ Overview and Case Study of Cross-Lab Assay Transfer in Immunoassay and Bioassay <i>Dong-Bei Li, WuXi AppTec</i></li> <li>▶ A Generic Approach to BAN2401 (MAb) Quantitation in Clinical Samples by LC/MS/MS <i>John Lin, Frontage Laboratories</i></li> <li>▶ LC-MS/MS Bioanalysis of Biotherapeutics in Drug Development <i>Guowen Liu, Bristol-Myers Squibb</i></li> </ul>

**11:00 AM - 2:00 PM**

**CPSA SHANGHAI EXPO - WHERE TECHNOLOGY AND SOLUTIONS MEET!**

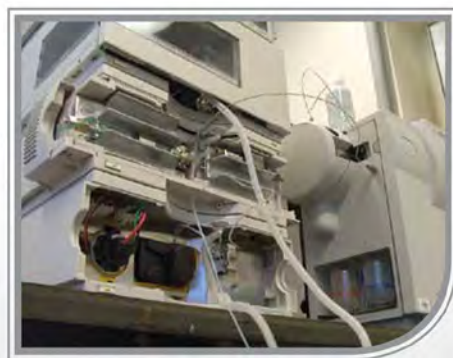
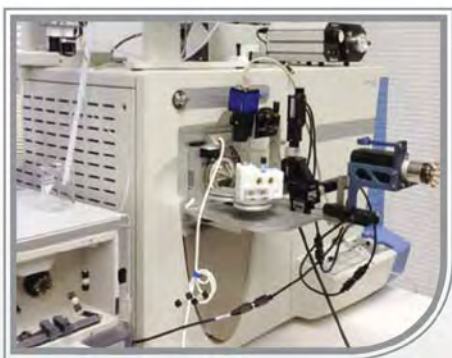
*Lobby*

*Chairs: Kelly Dong, GlaxoSmithKline; Shaolin Zhou, Novartis*

THURSDAY, APRIL 25



Let us help **future-proof** your lab



## What **defines** McKinley's services

### Transforming Global Outsourcing

With customers in over 60 countries, McKinley Scientific is the most trusted name in high-end used instrumentation. From large pharma to small, independent labs, our customer-centric service approach remains consistent around the globe.

### An Integrated Approach

McKinley Scientific's vertical integration of global laboratory equipment management with top-tier bioanalytical services yields sustainable low-cost advantages with flexibility of scale and market response

### Effective Results

With over 35 years of experience, McKinley Scientific will provide you with a complete solution to keep your CRO relevant & at the forefront of this ever changing industry. Let McKinley Scientific manage your instrumentation throughout its entire useful life, from acquisition to disposal.

[info@mckscientific.com](mailto:info@mckscientific.com)  
[www.mckscientific.com](http://www.mckscientific.com)

tel: +1 973.579.4144  
fax: +1 973.579.4145



**McKinley**  
SCIENTIFIC  
Global Headquarters  
33C Wilson Drive  
Sparta, NJ 07871 USA





## In Vitro ADMET Laboratories

### **In Vitro Toxicity Screening**

Primary Cell Cytotoxicity  
Multiple Organ Toxicity Screening  
Organ-specific Toxicity Screening  
Metabolism Dependent Cytotoxicity  
Anti-cancer Drug Screening

### **In Vitro Drug Metabolism**

Metabolite Stability  
Drug-drug Interaction  
Pathway Determination  
P450 Inhibition  
P450 Induction  
Adverse Drug Effects  
Metabolite Profiling



### **IdMOC™**

Integrated Discrete Multiple  
Organ Co-Culture

The IdMOC™ plate provides a method to model in vivo multiple-organ interaction in vitro. The IdMOC™ plate consists of multiple inner wells within a larger interconnecting chamber.

Multiple cell types are individually cultured in the inner wells and the chamber is filled with a single, universal medium allowing well-to-well communication.

### **Gene Expression**

Phase I and II Metabolism  
Influx and Efflux Transporters

### **In Vitro Research Products**

IdMOC™ Plates  
Cell Culture Media  
Collagen Coated Vessels

[Invitroadmet.com](http://Invitroadmet.com)





**仪器信息网**

www.instrument.com.cn

# 引领行业 把握先机

**130万仪器用户 2万仪器厂商的共同选择**

行业资讯 | 仪器展 | 仪器社区 | 网络讲堂 | 人才招聘







# 博

博，大通也。前沿Lab频道，呈顶尖实验室丰富信息，各异特色，谓之博；促实验室交流融汇，通达天下，谓之通。

大，人合一乃成。秉承以人为本的理念，融合线上博客圈/群组和线下活动，为学者间的交流搭建互动平台；百科人才，助力分析测试行业专业人士求职招聘；Webinar网络讲座，想听就点播，想问就举手，比现场更关注‘我’的感受；

# 大



# 精

精，择也。产品导购，10大角度对产品全方位透视，为您提供精准决策指南；仪器谱/耗材谱/试剂谱，业界功能最强大的产品展示平台，通用分类、厂商自建分类交叉索引，更快更准找到所需。

深，以别于平庸与泛滥。AnTPedia对产品、技术、事件、人物的资讯组织全面深入，力求还原真相。

# 深



# PROGRAM AGENDA

Thursday April 25

**11:30 AM - 12:30 PM**

*Yangtze Ballroom*

**POSTER SESSION / YOUNG SCIENTIST EXCELLENCE AWARD REVIEW**

Co-Chairs: Jenny Zheng, Janssen; Jing-Tao Wu, Millennium Pharmaceuticals  
Committee: Zack Cheng, AstraZeneca; Griff Humphreys, Bristol-Myers Squibb; Fred Li, Hua Medicine, Ltd.; Jing Lin, Sunovion; Jasminder Sahi, GlaxoSmithKline; Cindy Xia, Millennium Pharmaceuticals; Sylvia Zhao, Janssen; Shaolian Zhou, Novartis

*Sponsored by McKinley Scientific and New Objective*

**12:00 PM - 1:00 PM**

*Ballroom I*

**LUNCH & LEARN WORKSHOPS**

*Workshop Sponsored by Thermo Scientific*

- ▶ High Efficient Front-End for MS in Pharmaceutical Analysis Application Field  
*Luye Liu, Thermo Scientific*

*Ballroom II*

*Workshop Sponsored by PharmGo*

- ▶ Application of GastroPlus Modeling & Simulation in Pre-Clinical and Clinical Development  
*Chaopin Lee, GlaxoSmithKline*  
*Yang Sai, Hutchison Pharma*  
*Tao Chen, PharmGo*

*Danube Ballroom*

*Workshop Sponsored by VWR China*

- ▶ Applications of Human Hepatocytes for In Vitro ADME Studies  
*Maciej Czerwinski, XenoTech LLC*

*Boardroom*

*Workshop Sponsored by New Objective*

- ▶ Innovation in High-Performance LC-MS through Nano-Electrospray: The Future of Mass Spectrometry  
*Gary Valaskovic, New Objective*

THURSDAY, APRIL 25



## DISTINGUISHED LECTURE SERIES

THURSDAY 6:00 PM

**Distinguished Lecture Series Ballrooms I & II**

Data Metabolite Detection and Identification by Q-TRAP: Application of New Data Acquisition and Mining Tools  
*Ming Yao, Bristol-Myers Squibb*

Combining Selectivity and Sensitivity for Peptide Quantitation Using the QTRAP® 6500 System with IonDrive™ Technology  
*Gary Impey, AB Sciex*

Generously sponsored by

**AB SCIEX**

**Followed by CPSA Evening Social  
Hosted by AB SCIEX**

More information is available at the CPSA Registration table.



# PROGRAM AGENDA


Thursday April 25

1:30 PM - 3:00 PM

SYMPOSIA & ROUNDTABLES

Translational Sciences	Development Bioanalysis	Pharmaceutical Profiling and Formulation Design
<i>Ballroom I</i>	<i>Ballroom II</i>	<i>Rhine Ballroom</i>
<p><i>Chairs: Jing Lin, Sunovion; Cindy Xia, Millennium Pharmaceuticals</i></p> <ul style="list-style-type: none"> <li>▶ Improving the Predictive Power of Preclinical Tumor Models Through Translational Pharmacokinetic-Pharmacodynamic Analysis <i>Harvey Wong, Genentech</i></li> <li>▶ Model-Based Drug Development: Roles and Applications of PK/PD Modeling and Simulation <i>Xiang Gao, Pfizer</i></li> <li>▶ Ethnicity in Variability of Drug Responses: A Translational Approach <i>George Liu, Sanofi</i></li> </ul>	<p><i>Chair: Chengwei Fang, Pharmaron</i></p> <ul style="list-style-type: none"> <li>▶ EBF Perspective on Endogenous Analytes <i>Philip Timmerman, Janssen Pharmaceuticals</i></li> <li>▶ Achieving Low Detection Limit for Hormone Quantitation in Biofluid by Using Accurate Mass <i>Zheng Jiang, Thermo Fisher Scientific</i></li> <li>▶ Strategies for Dealing with Hemolyzed Samples in Regulated Bioanalysis <i>Daniel Tang, ICON</i></li> </ul>	<p><i>Chairs: Andy Lu, Shanghai Aucta Pharmaceuticals; Xiaoping Cao, Pfizer</i></p> <ul style="list-style-type: none"> <li>▶ Form and Function: The Role of Materials Science in Formulation Design <i>Alex Chen, Crystal Pharmatech</i></li> <li>▶ The Role of In Vitro-In Vivo (IVIVC) in Early and Full Development <i>Andy Lu, Shanghai Aucta Pharmaceuticals</i></li> <li>▶ Clinical Formulation Design and Best Practice with Case Studies <i>Anand Kulkarni, WuXi AppTec</i></li> <li>▶ Monitor and Control API Form Change in Tablet <i>Xiaoping Cao, Pfizer</i></li> </ul>

THURSDAY, APRIL 25

 <p><i>Program Chair</i> <b>Shane Needham</b> <i>Alturas Analytics</i></p> <p><i>Plenary Speaker</i> <b>Ola Saad</b> <i>Genentech</i></p> <p><i>Distinguished Lecturer</i> <b>Richard Kibbey</b> <i>Yale University</i></p>	<p style="text-align: center;">16th Annual Symposium on <b>Clinical &amp; Pharmaceutical Solutions Through Analysis</b></p> <p>Make plans now to attend CPSA 2013! This annual meeting began in 1998 and has evolved into the premier industry-led event dedicated to promoting awareness of issues and needs associated with research and development.</p> <p style="text-align: center;">Short Courses • Symposia • Roundtables • Poster Session Vendor Session • Exhibition • Workshops Colloquium Series</p> <hr/> <p style="text-align: center;">October 7 - 10, 2013 Sheraton Bucks County Hotel Langhorne, PA</p> <hr/> <p style="text-align: center;"><i>Where Technology and Solutions Have Always Met</i></p>
--	---

# PROGRAM AGENDA

Thursday April 25

3:30 PM - 5:00 PM

SYMPOSIA & ROUNDTABLES

ADMET	Regulated Bioanalysis	Proteomics
<i>Ballroom I</i>	<i>Ballroom II</i>	<i>Rhine Ballroom</i>
<p>ADMET Role in Drug Discovery <i>Chairs: Jenny Zheng, Janssen Pharmaceuticals; Jing-Tao Wu, Millennium Pharmaceuticals</i></p> <ul style="list-style-type: none"> <li>▶ Issue-Driven Approaches to Effective Minimization of DMPK Liability in Drug Discovery <i>Wei Tang, ChemPartner</i></li> <li>▶ Higher Throughput Assays for Adverse Drug Effects with Cryopreserved Human Hepatocytes <i>Albert Li, In Vitro ADMET Laboratories LLC</i></li> <li>▶ Panel Discussion: New ADMET Approaches for Drug Discovery <i>Moderators: Jenny Zheng, Janssen Pharmaceuticals; Jing-Tao Wu, Millennium Pharmaceuticals</i></li> </ul>	<p>Current Regulatory Discussion and Bioanalytical Perspectives <i>Chair: Yang Wang, Janssen Pharmaceuticals</i></p> <ul style="list-style-type: none"> <li>▶ Practical BA Considerations for Development of Therapeutic Proteins in China <i>Haifeng Song, Beijing Institute of Radiation Medicine</i></li> <li>▶ Japan Bioanalysis Forum (JBF) as a Member of Worldwide Bioanalysis Community <i>Yoshiaki Ohtsu, Astellas Pharma</i></li> <li>▶ Panel Discussion <i>Dong-Bei Li, WuXi AppTec; Daniel Tang, ICON; Philip Timmerman, Janssen Pharmaceuticals; Haifeng Song, Beijing Institute of Radiation Medicine; Yoshiaki Ohtsu, Astellas Pharma</i></li> </ul>	<p>Targeted Proteomics: Innovation and Applications for Protein Quantitation <i>Chairs: Gary Valaskovic, New Objective; Nathan Yates, University of Pittsburgh</i></p> <ul style="list-style-type: none"> <li>▶ Introduction to Targeted Proteomics <i>Nathan Yates, University of Pittsburgh</i></li> <li>▶ Data Independent Methods on HRMS for Quantitative Proteomics <i>Zhiqi Hao, Thermo Scientific</i></li> <li>▶ Emerging Technologies for Targeted Proteomics <i>Gary Valaskovic, New Objective</i></li> </ul>

THURSDAY, APRIL 25

6:00 PM – 7:00 PM

CPSA SHANGHAI DISTINGUISHED LECTURE SERIES

*Ballrooms I & II*

*Sponsored by AB SCIEX*

Distinguished Lectures

- ▶ Data Metabolite Detection and Identification by Q-TRAP: Application of New Data Acquisition and Mining Tools  
*Ming Yao, Bristol-Myers Squibb*
- ▶ Combining Selectivity and Sensitivity for Peptide Quantitation Using the QTRAP® 6500 System with IonDrive™ Technology  
*Gary Impey, AB Sciex*

7:00 PM – 9:00 PM

EVENING SOCIAL *Offsite Hosted by AB SCIEX*

More information is available at the CPSA Shanghai registration desk

# PROGRAM AGENDA

**Friday** April 26

**7:30 AM**

**REGISTRATION OPEN**

**8:30 AM – 9:15 AM**

**PLENARY LECTURE**

*Ballrooms I & II*

**Biomarker Discovery and Validation: Challenges and Promises**

*Ian A. Blair*

*A.N. Richards Professor of Pharmacology*

*University of Pennsylvania School of Medicine*

**9:00 AM – 5:00 PM**

**POSTER HALL OPEN**

*Yangtze Ballroom*

*Chairs: Alicia Du, ChemPartner; Frances Wang, Roche; Shaolian Zhou, Novartis*

*Posters will be available all day*

**9:30 AM – 11:00 AM**

**SYMPOSIA & ROUNDTABLES**

**ADME Enabling Technology and Approach**

*Ballroom I*

*Chairs: Dafang Zhong, Shanghai Institute of Materia Medica; Mingshe Zhu, Bristol-Myers Squibb*

- ▶ **Application of High Resolution Mass Spectrometry to Comprehensive Drug Metabolite Profiling: Case Studies**  
*Jie Xing, Shandong University*
- ▶ **Development and Application of Expressed Metabolizing Enzymes for Drug Metabolism Studies**  
*Shuqing Chen, Zhejiang University*
- ▶ **Radiolabeling is an Essential Technology for ADME Studies: Current Methodologies and Applications**  
*Mingshe Zhu, Bristol-Myers Squibb*

**Discovery Bioanalysis & New Technologies**

*Ballroom II*

*Chair: Kelly Dong, GlaxoSmithKline*

- ▶ **Analysis of Small Molecules In Vivo by MALDI TOF MS**  
*Zhongxiu Nie, Beijing Center for Mass Spectrometry*
- ▶ **MW, Sequencing and Glycosylation Site for Antibody Characterization by Using Hybrid Orbitrap Elite**  
*Ai-yin Nie, Thermo Scientific*
- ▶ **Application of HRMS and Swath Technology to Quantitative and Qualitative Analysis in DMPK Studies: Advantages and Challenges**  
*Hong Cai, Bristol-Myers Squibb*

**11:00 AM - 12:00 PM**

**POSTER SESSION / YOUNG SCIENTIST EXCELLENCE AWARD REVIEW**

*Yangtze Ballroom*

*Co-Chairs: Jenny Zheng, Janssen; Jing-Tao Wu, Millennium Pharmaceuticals  
Committee: Zack Cheng, AstraZeneca; Griff Humphreys, Bristol-Myers Squibb; Fred Li, Hua Medicine, Ltd.; Jing Lin, Sunovion; Jasminder Sahi, GlaxoSmithKline; Cindy Xia, Millennium Pharmaceuticals; Sylvia Zhao, Janssen; Shaolian Zhou, Novartis*

**Sponsored by McKinley Scientific and New Objective**

FRIDAY, APRIL 26

# PROGRAM AGENDA

Friday April 27

**11:00 AM - 2:00 PM**

**CPSA SHANGHAI EXPO - WHERE TECHNOLOGY AND SOLUTIONS MEET!**

Lobby

Chairs: Kelly Dong, GlaxoSmithKline; Shaolin Zhou, Novartis

**12:00 PM - 1:00 PM**

**LUNCH & LEARN WORKSHOPS**

Rhine Ballroom

*Workshop sponsored by McKinley Scientific*

- ▶ Extending the Utility and Performance of Legacy LC/MS/MS - Through Service and Innovation  
*Martin Steel, McKinley Scientific; Simon Bergeron, MSParts*

**1:30 PM - 3:00 PM**

**SYMPOSIA & ROUNDTABLES**

<b>Reactive Metabolites and Toxicity</b>  <i>Ballroom I</i>	<b>Biosimilars: Regulatory Considerations and Structure Analysis</b>  <i>Ballroom II</i>	<b>Pharmaceutical Sciences – Analytical Methodology and Technology</b>  <i>Rhine Ballroom</i>
<p>Chairs: Dafang Zhong, Shanghai Institute of Materia Medica; Mingshe Zhu, Bristol-Myers Squibb</p> <ul style="list-style-type: none"> <li>▶ Metabolic Activation and Pulmonary Toxicity of Bisbenzylisoquinoline <i>Jiang Zheng, University of Washington</i></li> <li>▶ Bioactivation of Chlorogenic Acid Under Pathological Conditions and Potential Drug-Drug Interaction with Baicalin <i>Cen Xie, Shanghai Institute of Materia Medica</i></li> <li>▶ Integrate Reactive Metabolite Evaluation Approach to Assess and Reduce Safety Risk <i>Liangfu Chen, GlaxoSmithKline</i></li> </ul>	<p>Chairs: Kate Yu, Waters Corporation; Hao Wang, State Key Lab of Antibody Medicine and Targeted Medicine</p> <ul style="list-style-type: none"> <li>▶ Analysis of a Fusion Protein by LC/MS <i>Hao Wang, State Key Lab of Antibody Medicine and Targeted Medicine</i></li> <li>▶ Improving Product Quality from the Early Stage Development of Biologics <i>George Wang, WuXi AppTec</i></li> <li>▶ Integrated Analytical Solutions for Biopharmaceutical Analysis and Characterization <i>Lankun Song, Waters Corporation</i></li> </ul> <p>Panel Discussion:</p> <ul style="list-style-type: none"> <li>▶ Analytical Characterization Techniques, Needs and Adoption</li> <li>▶ Biosimilar in China: Regulation and Update</li> <li>▶ Bioanalysis Needs</li> <li>▶ Glycan Analysis</li> <li>▶ HDX: Higher Order Structure Analysis</li> </ul>	<p>Chairs: Todd Gillespie, Eli Lilly and Company; Fred Li, Hua Medicine Limited</p> <ul style="list-style-type: none"> <li>▶ Supercritical Fluid Chromatography and its Application in Drug Discovery and Development with Case Studies <i>Baoning Su, WuXi AppTec</i></li> <li>▶ Elemental Impurities, A New Requirement <i>Jiong Yu, Lab Service of USP China</i></li> <li>▶ Geneotoxic Impurity Analysis and Control Strategy <i>Wei Li, Roche</i></li> </ul>

**3:30 PM - 5:00 PM**

**SYMPOSIA & ROUNDTABLES**

FRIDAY, APRIL 26

# PROGRAM AGENDA

Friday April 27

FRIDAY, APRIL 26

<b>Drug-Drug Interactions</b> <i>Ballroom I</i>	<b>Traditional Chinese Medicine</b> <i>Ballroom II</i>
<p><i>Chairs: Jeff Zhang, Novartis; Yurong Lai, Pfizer</i></p> <ul style="list-style-type: none"> <li>▶ <b>New Aspects of Metabolizing Enzyme-Mediated DDI</b> <i>Chuang Lu, Millennium Pharmaceuticals</i></li> <li>▶ <b>Impact of Transporter Studies on Drug Discovery and Development: Cynomolgus Monkey OATP DDI In Vitro to In Vivo Extrapolation</b> <i>Hong Shen, Bristol-Myers Squibb</i></li> <li>▶ <b>Assessment of Transporter Related Toxicity in Drug Discovery and Development</b> <i>Jasminder Sahi, GlaxoSmithKline</i></li> <li>▶ <b>Strong Inhibitory Effects on Human Metabolizing Enzymes by TCM Constitutes and Related Herb-Drug Interactions</b> <i>Ling Yang, Dalian Institute of Chemical Physics</i></li> </ul>	<p><b>Traditional Chinese Medicine: Addressing TCM Challenges with Modern Analytical Tools</b> <i>Chairs: Xijun Wang, Heilongjiang TCM University; Kate Yu, Waters Corporation</i></p> <ul style="list-style-type: none"> <li>▶ <b>Chromatography: From Nano to Prep – The Foundation of TCM Analysis</b> <i>Yan Zhou, Chengdu Institute of Biology, Chinese Academy of Sciences</i></li> <li>▶ <b>LC/TOF MS for Effective Ingredient Identification for TCM</b> <i>Yi Dai, College of Pharmacy, Jinan University</i></li> <li>▶ <b>Metabonomics Approach to Understand Therapeutic Mechanisms of TCM</b> <i>Xijun Wang, Heilongjiang TCM University</i></li> </ul>

**5:00 PM - 6:00 PM**

**INNOVATOR AWARD SESSION**

*Rhine Ballroom*

*Chairs: Kelly Dong, GlaxoSmithKline; Shaolian Zhou, Novartis*

- ▶ **A Complete Workflow Solution for Monoclonal Antibody Glycoform Characterization Combining a Novel Glycan Column Technology and Bench-Top Orbitrap LC-MS/MS**  
*Zhiqi Hao<sup>1</sup>, Udayanath Aich<sup>2</sup>, Julian Saba<sup>1</sup>, Rosa Viner<sup>1</sup>, Xiaodong Liu<sup>2</sup>, Srinivasa Rao<sup>2</sup>, Chris Pohl<sup>2</sup>, Andreas Huhmer<sup>1</sup> and Patrick Bennett<sup>1</sup>*  
*1) Thermo Fisher Scientific, San Jose, CA, USA; 2) Thermo Fisher Scientific, Sunnyvale, CA, USA*
- ▶ **A Flexible SPE/LC/MS/MS Platform for the Simultaneous Quantitation of Multiple Amyloid Peptides in Cerebrospinal Fluid**  
*Erin E.Chambers<sup>1</sup>, Mary E.Lame<sup>2</sup>, Diane M.Diehl<sup>1</sup>, Wang Hu<sup>3</sup>*  
*1) Waters Corporation, Milford, MA USA; 2)Pfizer, Groton,CT USA; (3)Waters Corporation, Shanghai*
- ▶ **A System for Reliable Ultra-low Flow Nanospray: Breaking barriers to Enable Metabolite Quantitation**  
*Gary Valaskovic<sup>1</sup>, Ben Ngo<sup>1</sup>, Jing-Tao Wu<sup>2</sup>, Shaoxia Yu<sup>2</sup>*  
*1) New Objective Inc. Woburn MA USA; 2) Millennium:The Takeda Oncology Company, Cambridge MA USA*
- ▶ **A Generic Multiple Reaction Monitoring-based Approach for Flavonoids Profiling in Plants using a Hybrid Triple Quadrupole Linear Ion Trap Mass Spectrometer**  
*Zhixiang Yan, Ru Yan*  
*State Key Laboratory of Quality Research in Chinese Medicine, Institute of Chinese Medical Sciences, University of Macau, Taipa, Macao, China*
- ▶ **Simultaneous Determination of Four Endogenous Phytosterol Biomarkers in Human Serum by LC/MS/MS**  
*Ming Zuo, Shenghui Tang, Tianyi Zhang*  
*Frontage Laboratories (Shanghai) Co., Ltd., Shanghai*

# PROGRAM AGENDA

**Friday** April 27

**6:00 PM – 7:30 PM**

*Ballrooms I & II*

**CPSA SHANGHAI CLOSING GALA**

---

**Dinner, Awards and Celebration**

Sponsor's Toast

Program Chair Recognition

*Mike Lee, Milestone Development Services*

CPSA Shanghai 2014 – Program Chair Announcement

*Naidong Weng, Janssen Pharmaceuticals*

Innovator Award Presentation

*Kelly Dong, GlaxoSmithKline; Shaolian Zhou, Novartis; Mingshe Zhu, Bristol-Myers Squibb*

Young Scientist Excellence Award Presentation

*Jenny Zheng, Janssen Pharmaceuticals; Jing-Tao Wu, Millennium Pharmaceuticals*

FRIDAY, APRIL 26

# PROGRAM AGENDA

**Saturday** April 27

**8:00 AM**

**REGISTRATION**

---

**9:00 AM – 11:15 AM**

**JOINT SESSION WITH LOCAL BIOANALYTICAL & METABOLISM DISCUSSION GROUPS**

---

*Held at The Shanghai Institute of Materia Medica*

**I. Drug Metabolism and Pharmacokinetics**

*Chair: Jing-Tao Wu, Millennium*

- ▶ Higher Throughput Human Hepatocyte Assays for Reversible and Time-dependent CYP3A4 inhibition, CYP3A4 Induction, and Hepatotoxicity  
*Albert Li, In Vitro ADMET Laboratories*
- ▶ The Role of DMPK in Drug Discovery and Development  
*Jing Lin, Sunovion*
- ▶ Transporters in Drug Disposition, Safety, and Efficacy: Implications and Strategy in Drug Discovery and Development  
*Liangfu Chen, GlaxoSmithKline*

**II. Bioanalysis**

*Chair: Kelly Dong, GlaxoSmithKline*

- ▶ Challenges in Bioanalysis of Endogenous Analytes: Quantitation of Glucose in Plasma  
*Zheming Gu, XBL-China*
- ▶ LC/MS/MS Analysis of Proteins and Peptides  
*John Lin, Frontage*
- ▶ Bioanalysis in Human Bioequivalence Studies  
*Huichen Liu, Beijing Aerospace Hospital*

Directions to The Shanghai Institute for Materia Medica

From the Renaissance Shanghai Pudong Hotel, take a taxi to The Shanghai Institute of Materia Medica (中国科学院上海药物研究所) located at 555 Zu Chong Zhi Road, Zhang Jiang Hi-Tech Park, Pudong, Shanghai (上海市浦东张江祖冲之路555号). The cost of the taxi is around RMB 18 (\$3.00).

To take public transportation, walk to Shanghai Science and Technology Museum and take Subway Line #2 towards the airport. Get off at Zhang Jiang Hi-Tech Park (third stop). The Shanghai Institute of Materia Medica is directly across the street from the subway station.





WE NEED THIS TO BE

# Easy to use

...BUT WE DON'T WANT TO GIVE UP ANY

# Performance



Model PCH-550  
For Thermo LTQ™, Orbitrap™,  
Velos™, QExactive™, and TSQ™

NATHAN YATES  
UNIVERSITY OF PITTSBURGH

You asked for it. We listened.

- Plug & spray operation
- Single connection
- Temperature-control
- Factory-verified voltage connections
- Chip-to-chip consistency
- Inexpensive to operate

### SPECIAL INTRODUCTORY OFFER

PicoChip Stage  
Two PicoChip Columns

COMPLETE SET UP

**Starter Kit**

The proven high-performance of the PicoFrit® column is integrated with a factory-configured high-voltage liquid-junction connection in a compact, optimized, rugged format. The PicoChip is not only easy to use, but easy on the budget, too. And it's all backed by New Objective's commitment to service and quality.



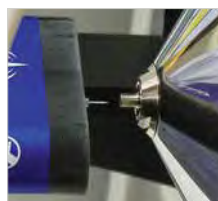
Place PicoChip on source



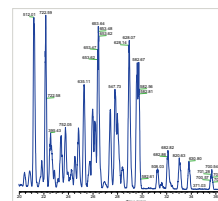
Connect tail to LC



Insert chip key to expose tip



Tip is exposed to spray



Collect data



Order PicoChip in a variety of colors, whether to color-code experiments or to designate users



# 具备三重四极杆性能的跨界高分辨质谱平台

AB SCIEX 4600系列+ AB SCIEX 5600+系列



## 实力非凡 完美性能

- 在同一平台上集成了定性探索、全貌解析和高分辨定量的三种工作流程。
- 每秒100张谱图，与超高压液相完美匹配，让蛋白组学样本、中药代谢产物等复杂体系得以进行轮廓研究，高通量分析。
- 定量能力可以与高性能三重四极杆相媲美，准确鉴定同时完成定量，双倍提高生产力。

**AB SCIEX**

### AB SCIEX中国各办事处

北京办事处：北京市朝阳区酒仙桥路14号 兆维大厦1001室

电话：010-5808 1388

传真：010-5867 1950

上海办事处：上海市田林路888号 科技绿洲一号楼102室

电话：021-2419 7200

传真：021-2419 7333

广州办事处：广州市体育西路109号 高盛大厦15C室

电话：020-8510 0200

传真：020-3876 0835

全国免费垂询电话：8008203488

网址：[www.absciex.com](http://www.absciex.com) [www.absciex.com.cn](http://www.absciex.com.cn)